

AZ874MDVR



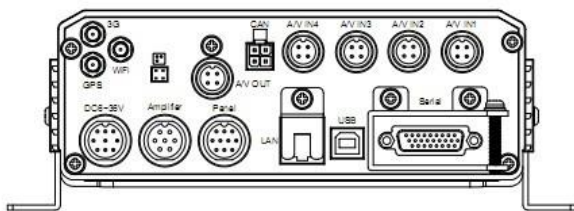
Main Features

- ◆ Modular design for easy maintenance
- ◆ Revolutionary anti-vibration technology for 360 degree installation
- ◆ Total resources 4CH full D1/8CH HD1 real time(100/120fps)
- ◆ Supports 2.5" 1TB hard disk storage and SD card for mirror recording
- ◆ Dual streams for local recording and wireless transmission
- ◆ Internal GPS for location tracking
- ◆ Built-in 3G for live view and remote monitoring
- ◆ Internal WIFI 802.11N supported for all the regular video files and alarm files download
- ◆ Built-in inertia sensor
- ◆ Built-in heater(optional)
- ◆ Patented FS 3.0 file system for data reliability and data recovery

Specification

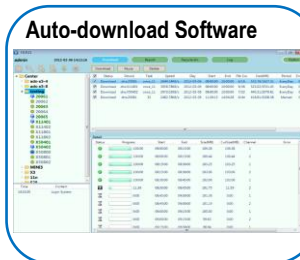
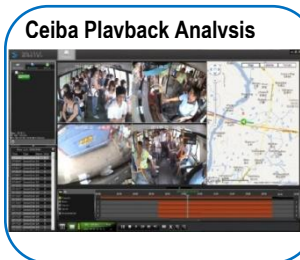
Product Series		
Function Overview		Live view, recording, playback, network, GPS location tracking
System	OS	Embedded real-time Linux
	Control Mode	IR remote control, CP3, network
Video	Input	4 channels (Aviation-din X4)
	Output	2 channel (Aviation-din X2)
	Total Resource	4CH D1
	Video System	NTSC/PAL
Audio	Input	4 channels (Aviation-din X4) Note: The frame rate setup must be above 6fps
	Output	2 channels (Aviation-din X2)
Display	Display Split	1/4
	OSD	GPS information, alarm, temperature, acceleration, voltage, firmware version, MCU version, device information, network status
Recording	Video/Audio Compression	H.264/ADPCM
	Image Resolution	PAL: D1 (704*576), HD1 (704*288), CIF (352*288) NTSC: D1 (704*480), HD1 (704*240), CIF (352*240)
	Image Quality	1~8 levels adjustable (1 is the best)
	Recording Mode	General/schedule/alarm/ (sensor trigger, speed, acceleration, video loss, temperature)
	Pre-recording	1~60 minutes
	Post-recording	30~1800 minutes
	Mirror Recording	Yes
Playback & Backup	Playback Channel	1 channel by local playback, 1/4/8 channels by playback software
	Search Mode	Date/time, channel, event
	Backup Mode	USB, HDD, network
Network	Ethernet	RJ45 port (10/100M)
	3G	HSPA / EVDO (optional)
	WIFI	802.11b/g/n (optional)
	GPS	GPS location tracking, speed detection and sync time
Storage	HDD	2.5" SATA HDD Maximum 1TB
Interface	USB	USB 2.0 × 2
	RS232/RS485	RS232 × 2 / RS485 × 2
	Sensor	8 inputs, 2 outputs
	Panel	CP3 (The multi-functional panel)
Power	Input	6 ~36 V
	Output	12V@500mA; 5V@500mA
	Consumption	< 15W (without cameras and any accessories)

Product Rear Connection View



Physical Characteristic	Dimension (L × W × H)	192.5 × 175 × 67mm
	Weight	2.6kg
Environment	Operating Temperature	-25℃ ~ +55℃ (Please use built-in heater if the temperature is below 0℃)
	Operating Relative Humidity	10%~90%

PC Software



Optional Accessories

