

# AZ844MDVR



## Main Features

- ◆ Revolutionary anti-vibration for 360 degree installation
- ◆ Built-in capacitor provides MDVR with enough time to pack the files to avoid any video files loss when the external power is cut off suddenly
- ◆ Supports 2.5" 1TB hard disk storage and SD card for mirror recording
- ◆ 100% metal material
- ◆ Total resources: 4 channels D1 at real time(100fps/ 120fps)
- ◆ Built-in GPS for location tracking
- ◆ Built-in WIFI for video files and alarm files download
- ◆ Built-in 3G for live view and remote management
- ◆ Patented FS 3.0 file system for data reliability and data recovery
- ◆ Pre-recording maximum 60 minutes
- ◆ Low voltage protection

## Specification

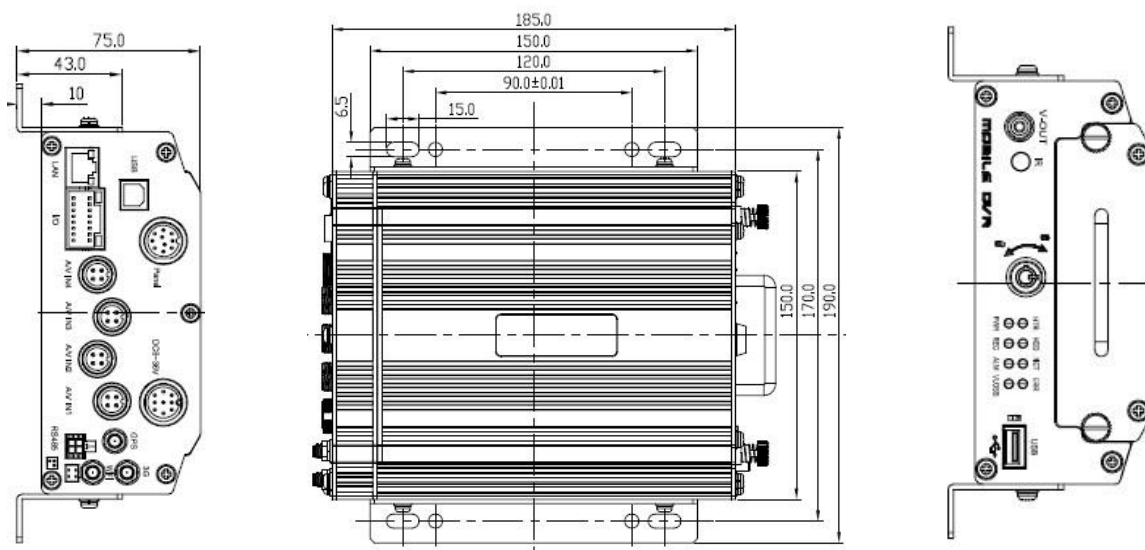
Function Overview		Live view recording, playback, network, GPS location tracking
System	OS	Embedded real-time Linux
	Control Mode	IR remote control, control panel, network, CP3
Video	Input	4 channels (Aviation-din X4)
	Output	1 channel (Aviation-din or RCA)
	Video System	NTSC/PAL
Audio	Input	4 channels (Aviation-din X4) (Note: The frame rate setup must be above 6fps)
	Output	1 channels (Aviation-din or RCA)
Display	Display Split	1/4
	OSD	GPS information, alarm, temperature, acceleration, voltage, firmware version, MCU version, device information, network information
	Operation Interface	Semi-transparent GUI
Recording	Video/Audio Compression	H.264/ADPCM
	Image Resolution	PAL: D1 (704*576), HD1 (704*288), CIF (352*288) NTSC: D1 (704*480), HD1 (704*240), CIF (352*240)
	Image Quality	1~8 levels adjustable (1 is the best)
	Recording Mode	General/schedule/alarm/ (sensor trigger, speed, video loss)
	File Packing Time	15, 30, 45, 60 minutes
	Pre-recording	Maximum 60 minutes
	Post-recording	Maximum 30 minutes
	Mirror Recording	Yes
Playback & Backup	Playback Channel	1/4 (1 channel by local playback, 4 channels by playback software)
	Search Mode	Date/time, channel, file type
	Backup Mode	USB, network
Network	Ethernet	RJ45 port (10/100M)
	3G	HSPA/EVDO (optional)
	GPS	GPS location tracking, speed detection and sync time
Storage	HDD	Maximum 1TB 2.5" hard disk>>>>>
Interface	USB	USB 2.0 × 2
	RS485	RS485 × 1
	Sensor	8 inputs, 2 outputs
	UPS	Uninterrupted power supply for MDVR
Power	Input	8 ~36 V
	Output	12V@2A; 5V@1A
	Consumption	12W (without cameras and any accessories)

## Dimension (unit: mm)

More information [www.streamaxtech.com](http://www.streamaxtech.com)



All rights reserved  
All specifications are therefore subject to change without notice.



Physical Characteristic	Dimension (L × W × H)	185mm × 170mm × 75mm
	Weight	2kg
Environment	Operating Temperature	-25℃ ~ +55℃ (Please use built-in heater if the temperature is below 0℃)
	Operating Relative Humidity	10%~90%

## PC Software

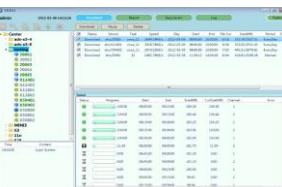
### Ceiba Playback Analysis



### CMS



### Auto-download Software



### MINI Player



## Optional Accessories

### GPS module and Antenna



### Built-in WIFI module and Antenna



### Built in 3G module and Antenna



### Alarm Box



### CP3



### UPS



### LED Panel



### Transfer Cable



### DIN Cable



### Lock Box



### Inertial Sensor



### Fireproof Box



### Control Panel



More information [www.streamaxtech.com](http://www.streamaxtech.com)



All rights reserved  
All specifications are therefore subject to change without notice.